

# A NEW DESIGN STORY

P.02 MODERN CHARACTER DEFINED

P.04 SMART DETAILS DESIGNED FOR YOU

P.03 INSIDE STORIES

P.05 YOUR LIFE IN BALANCE

AN ANTHEM COMMUNITY  
*Goodwin*  
AT BELMONT

CRAFTED WITH CARE | SIMPLY INSPIRED INTERIORS





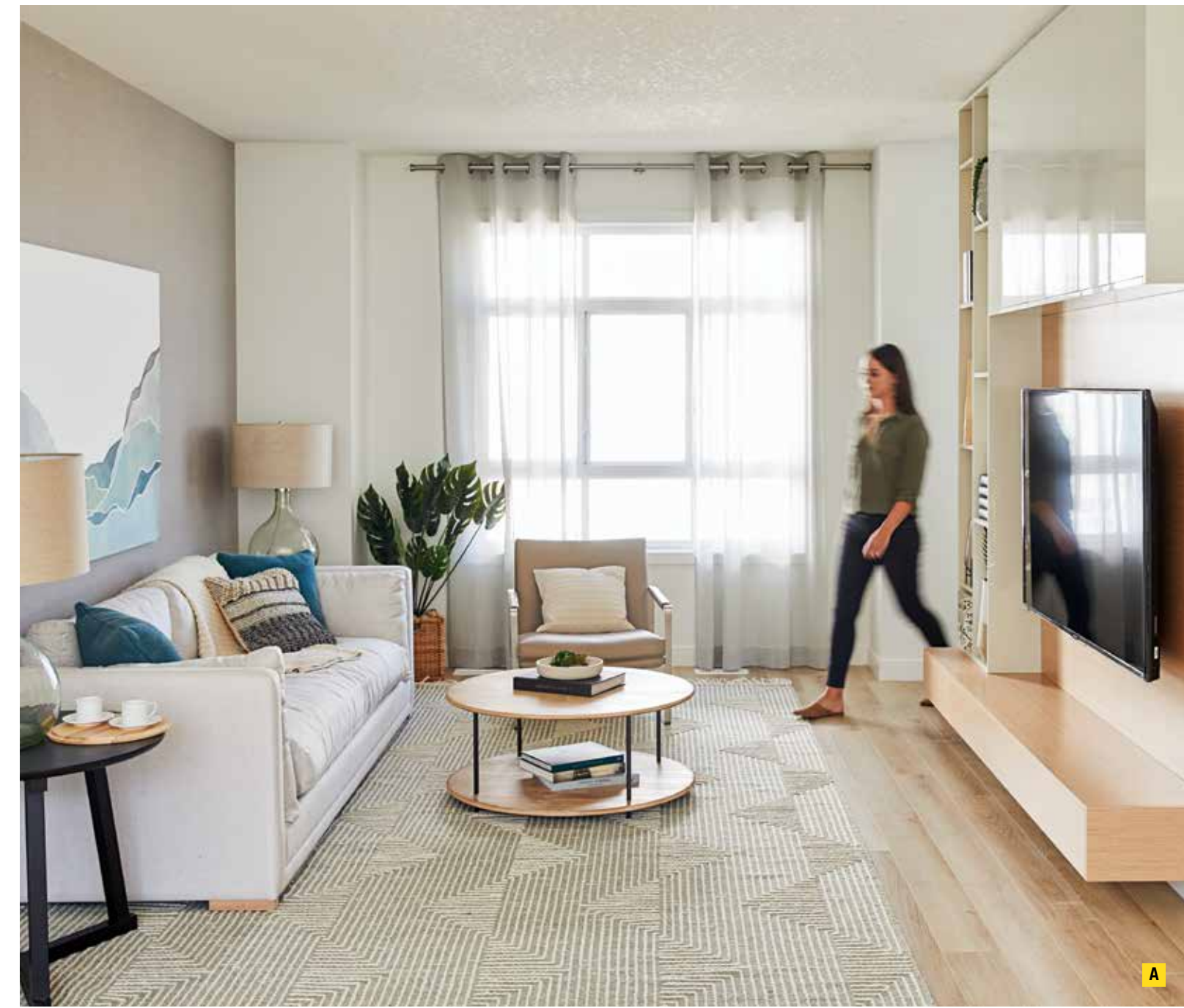
**YOUR LIFE  
MEETS YOUR  
STYLE**

**MODERN PRAIRIE CHARACTER—  
ARCHITECTURE FOR THE WAY  
YOU LIVE.**

Three storey homes with dramatic windows,  
deep overhangs and generous balconies.



# SIMPLY INSPIRED INTERIORS



- A** OVERSIZED WINDOWS AND 9-FOOT CEILINGS FRAME SPACES FILLED WITH LIGHT.
- B** INVITE PEOPLE OVER—GOODWIN IS IDEAL FOR ENTERTAINING.
- C** CABINETS AND DRAWERS HAVE SOFT-CLOSE HARDWARE, SO CONTENTS STAY IN PLACE.

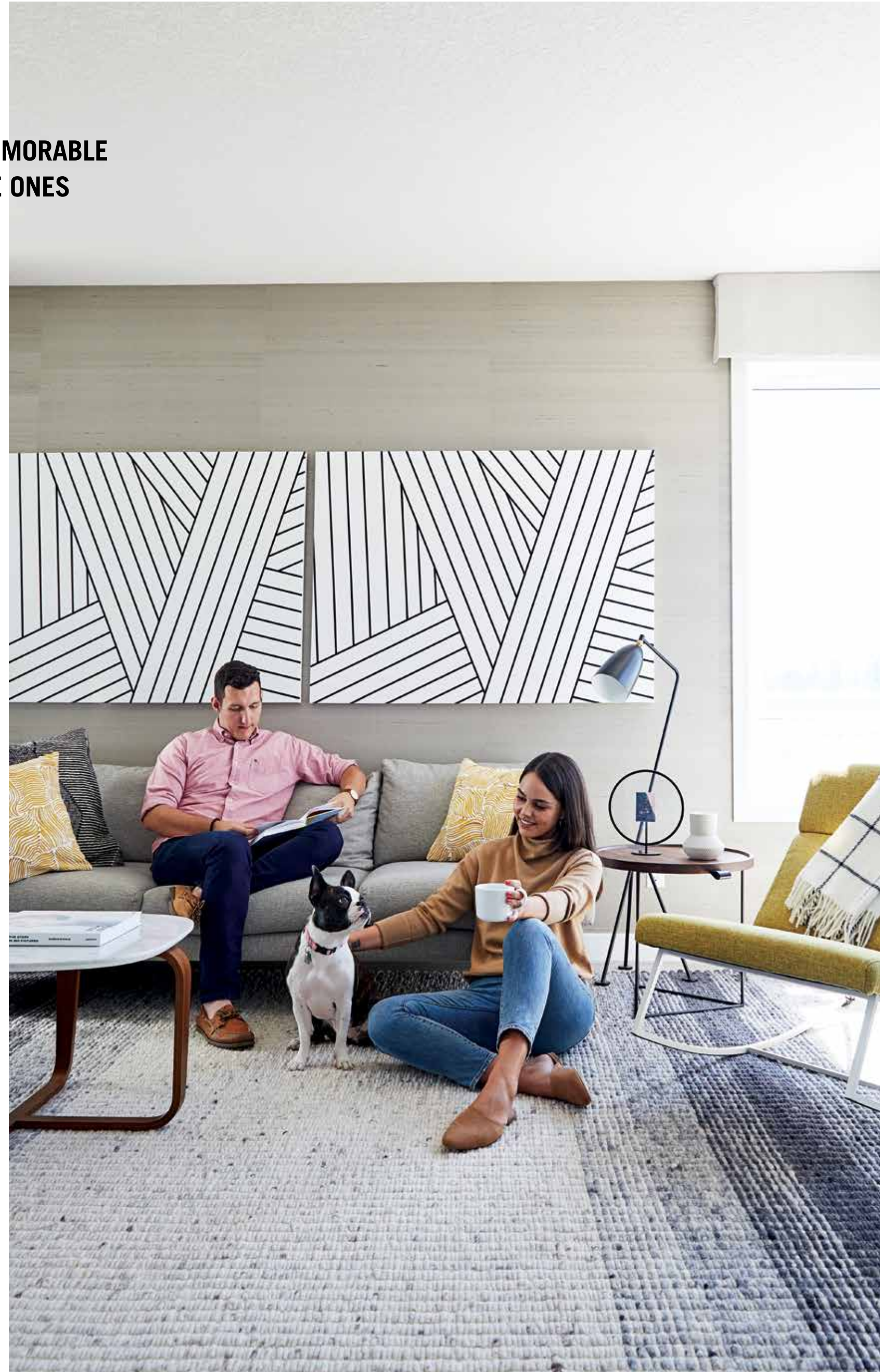
## WHERE YOU WANT TO BE

### COME HOME TO A CALM SPACE.

Clean lines, true grains and tactile surfaces say *relax* from the second you come home. With three levels of open concept living, restful rooms are tucked away from the bustle of family life.



# A PLACE FOR MEMORABLE TIMES WITH THE ONES YOU LOVE.



Goodwin's durable materials make 4-legged family members feel at home too.



A



A SPACIOUS MASTER BEDROOMS FEATURE GENEROUS WINDOWS THAT INVITE MORNING LIGHT IN.

B UNDERMOUNT PORCELAIN SINKS FOR ENDURING, EFFORTLESS BEAUTY.

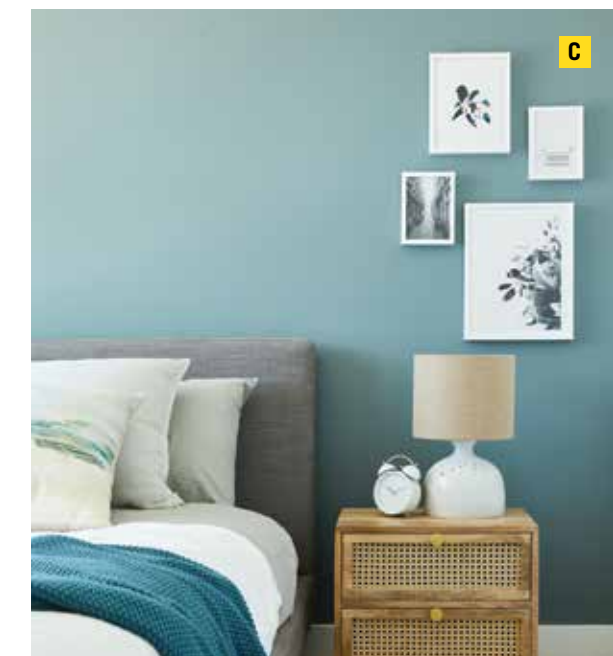
C SOFT CARPETING IN BEDROOMS IS LUXURY ON BARE FEET.



B

Your home looks great now and will stand the test of time. Modern fixtures and finishes create the look you love with minimal care required.

The intelligent layout makes a sociable statement on the main floor, while giving bedrooms their own quiet space on upper storeys.

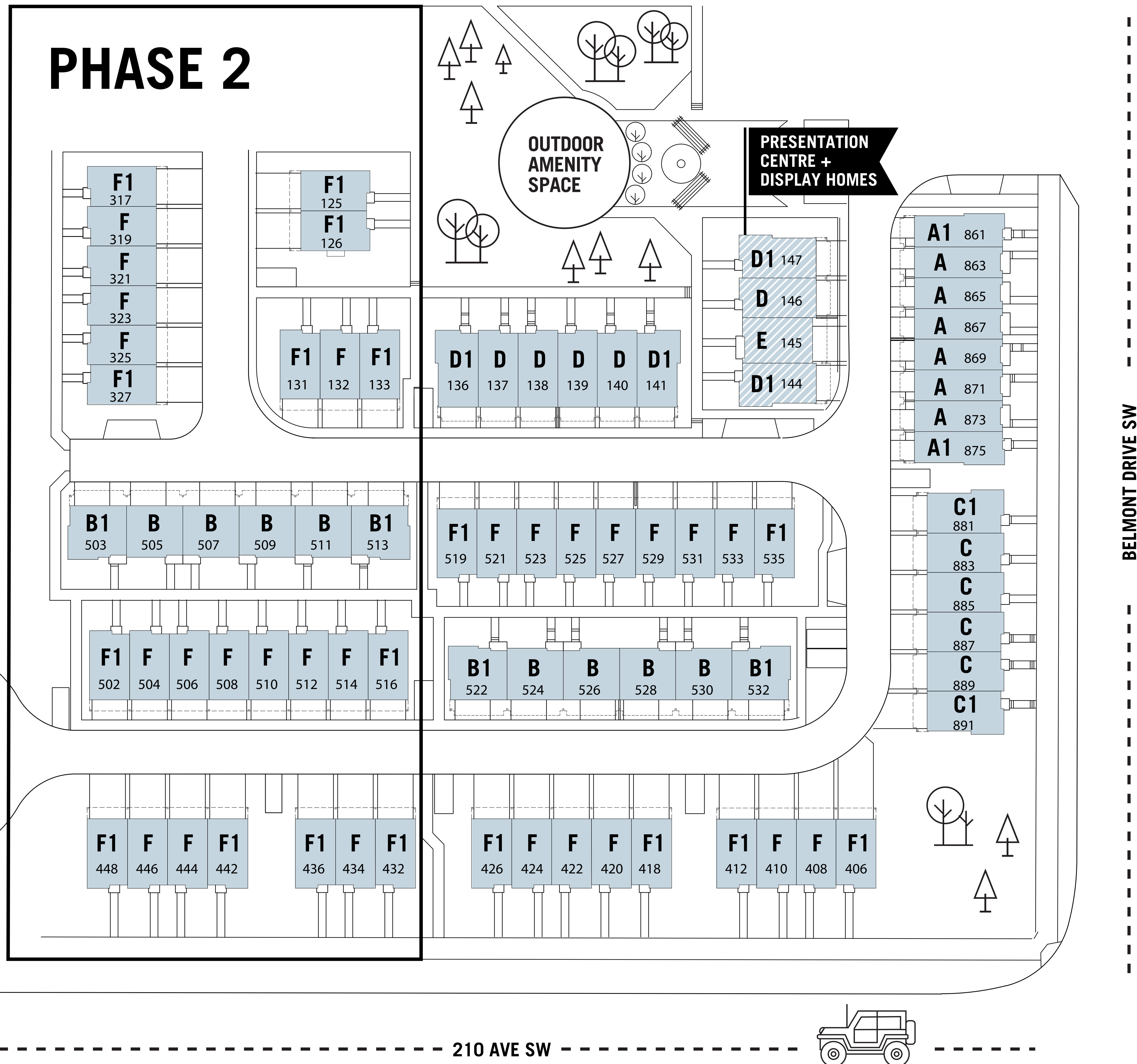


C

# PHASE 1 & 2

**A DISTINCT  
 ARCHITECTURAL  
 STATEMENT THAT  
 BRINGS CHARACTER  
 AND CRAFTSMANSHIP  
 HOME.**

<b>B</b>	2 BED 2.5 BATH	1,262 SF INT 183 SF EXT	1,445 SF TOTAL
<b>B1</b>	2 BED 2.5 BATH	1,266 SF INT 190 SF EXT	1,456 SF TOTAL
<b>F</b>	3 BED 2.5 BATH	1,255 SF INT 90 SF EXT	1,345 SF TOTAL
<b>F1</b>	3 BED 2.5 BATH	1,266 SF INT 90 SF EXT	1,356 SF TOTAL





# Anthem

Founded 28 years ago, Anthem is a team of 400 people driven by creativity, passion and direct communication. Anthem and Anthem United have invested in, developed or managed—alone or in partnership—more than 260 residential, commercial and retail projects with an aggregate value of more than \$6 billion across western North America.

Our growing residential portfolio includes 14,600 homes that are complete, in design or under construction, from master planned mixed use residential and multifamily, to townhome and single family communities.

We own, co-own and manage 5 million square feet of retail, industrial, residential rental and office space. We have developed more than 60 communities and currently hold over 5,000 acres of land across Alberta, British Columbia and California.

Anthem is a real estate development, investment and management company that strives, solves and evolves to create better spaces and stronger communities.

## We are Growing Places.

A WATERFRONT  
CALGARY, AB

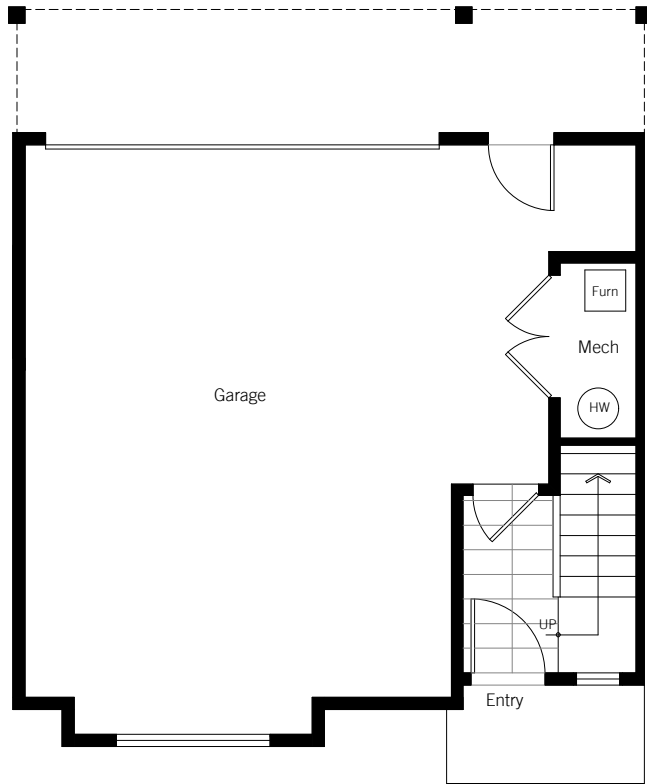
B FOUNDERS BLOCK NORTH  
NORTH VANCOUVER, BC

C UNION  
VICTORIA, BC

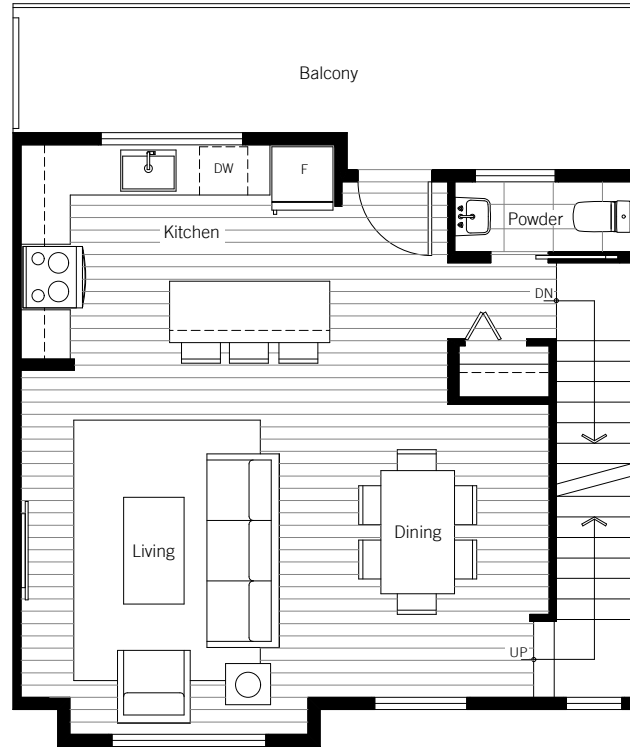
GOODWIN  
PRESENTATION CENTRE

147-857 Belmont Dr SW  
Calgary, AB T2X 4P2  
403.266.0336

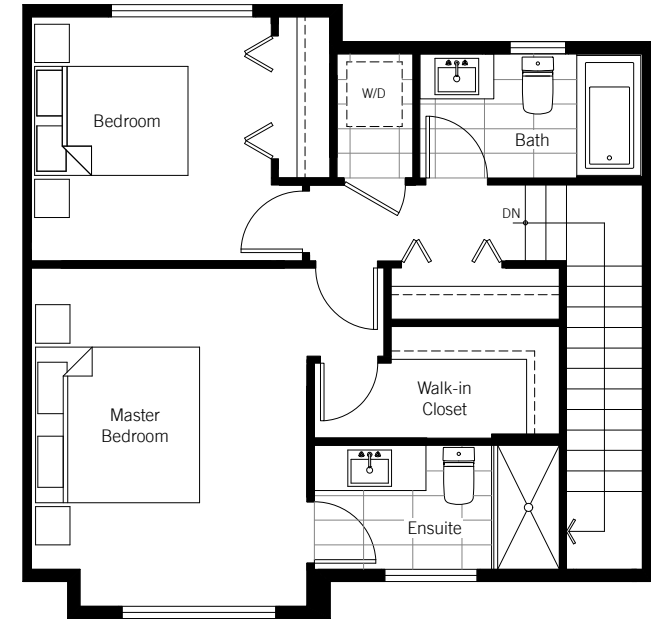
The developer (Anthem Belmont Townhomes 1 Developments LP.) reserves the right to make changes and modifications to the information contained herein. Maps, views, photography, and renderings are representational only and are not necessarily accurate, and final design, construction, and features may differ. Floor plans, layouts, finishes, prices, and availability are subject to change without notice. Please contact a developer sales representative for details. The developer may also make such further development modifications as are permitted by the disclosure statement, as may be amended, the contract of purchase and sale between a purchaser and developer (if applicable), or otherwise. E. & O.E.



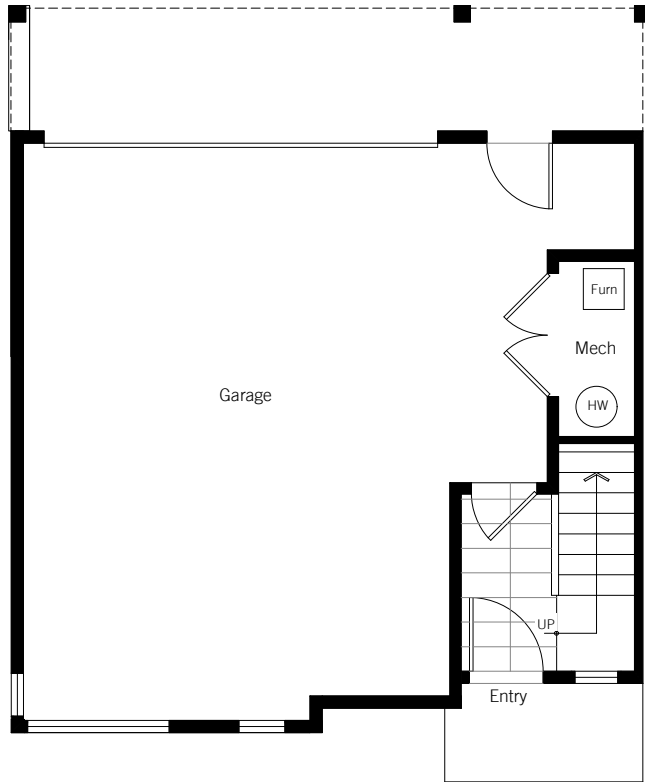
**LOWER**



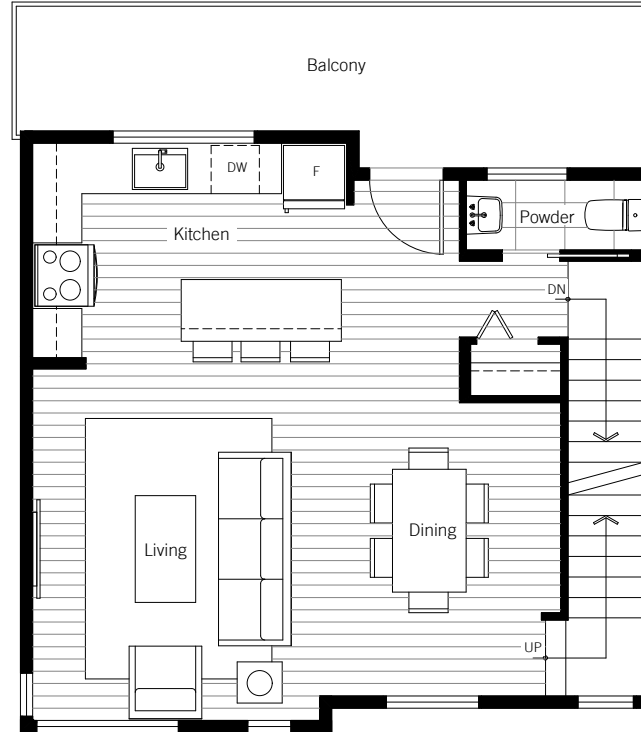
**MAIN**



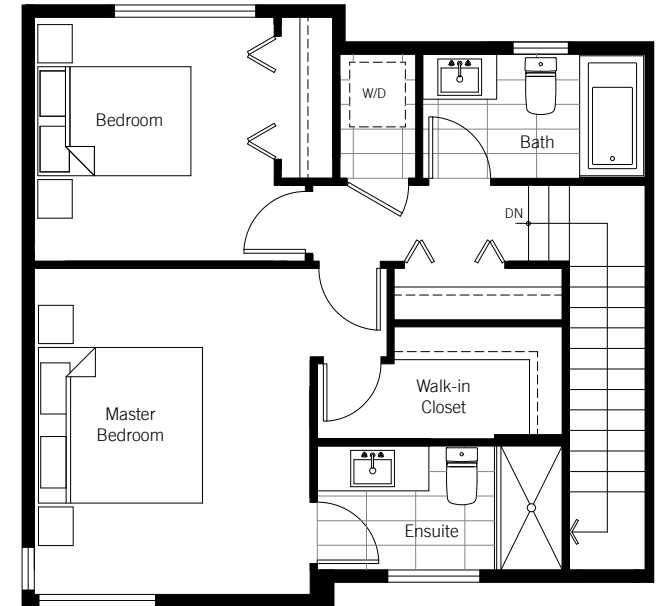
**UPPER**



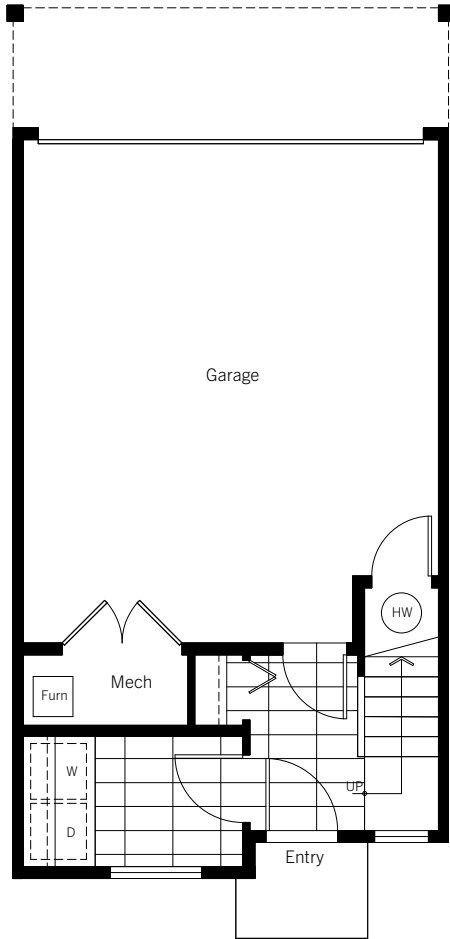
**LOWER**



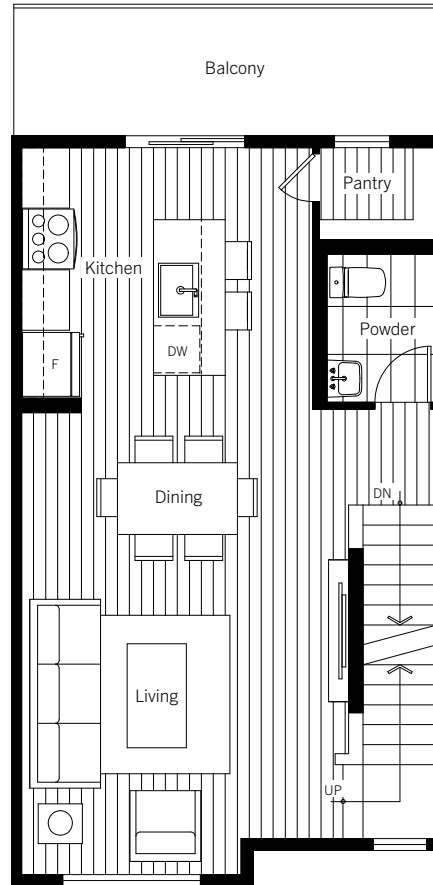
**MAIN**



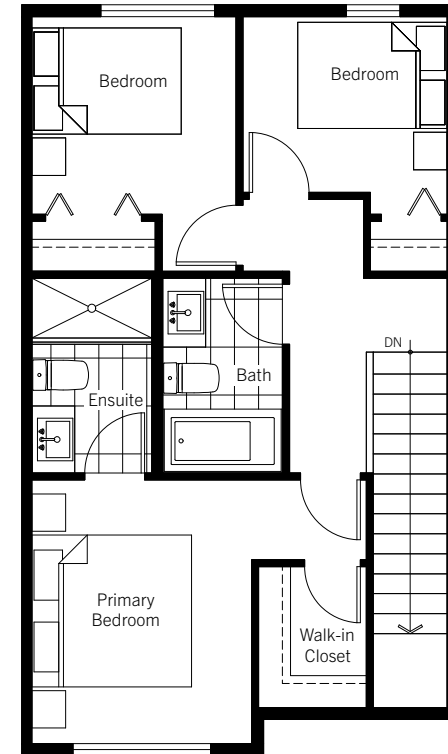
**UPPER**



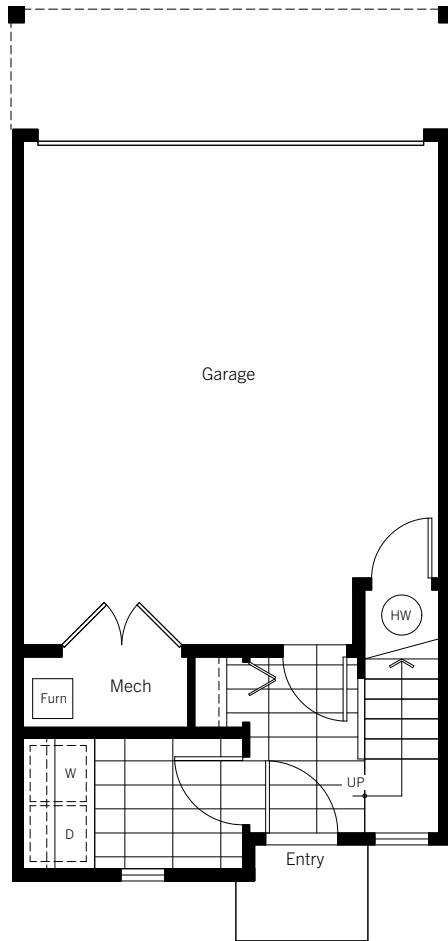
**LOWER**



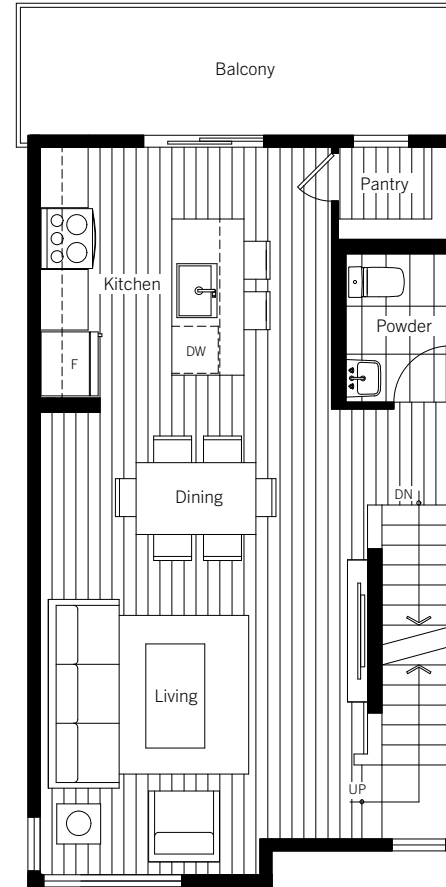
**MAIN**



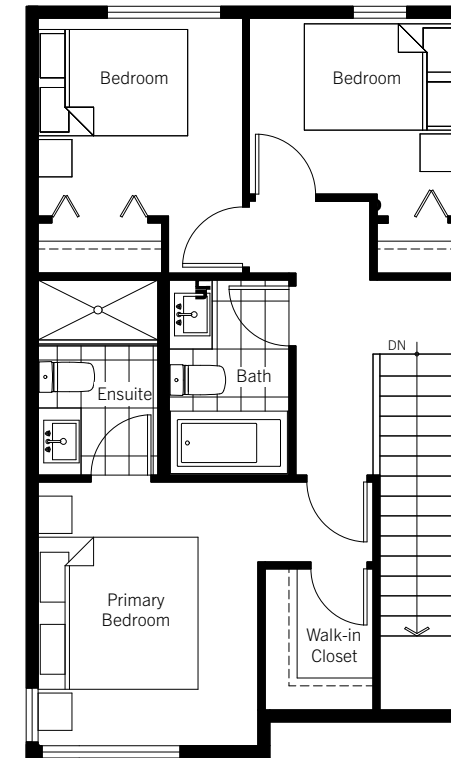
**UPPER**



**LOWER**



**MAIN**



**UPPER**